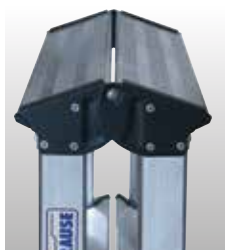


MONTO[®] **Double-sided standing step** **ladder Dopplo[®]**

Lightweight, double-sided aluminium step ladder suitable for a range of different uses

- + Sturdy, impact-resistant metal hinge connections
- + Stable 6-times rivetted step/side rail connections for more stability
- + Anti-slip, profiled and floor protecting foot caps
- + Tear-proof straps

i According to EN 131 – Part 3 double-sided step ladders are not allowed to be ascended any higher than the third rung/step from the top!



Number of steps			2 x 3	2 x 4	2 x 5	2 x 6	2 x 7	2 x 8
1	A up to approx.	in m	2.20	2.40	2.65	2.85	3.05	3.30
	B approx.	in m	0.20	0.40	0.65	0.85	1.05	1.30
2	C approx.	in m	0.70	0.90	1.15	1.40	1.60	1.85
	D approx.	in m	0.65	0.85	1.05	1.30	1.50	1.70
Product weight approx.		in kg	2.5	3.5	4.5	5.5	7.0	8.5
L B T	Width (B) approx.	in m	0.43	0.45	0.48	0.50	0.52	0.55
	Depth (T) approx.	in m	0.16	0.16	0.16	0.16	0.16	0.16
	Length (L) approx.	in m	0.70	0.95	1.15	1.40	1.65	1.85
Article No.			120328	120335	120342	120359	120366	120373