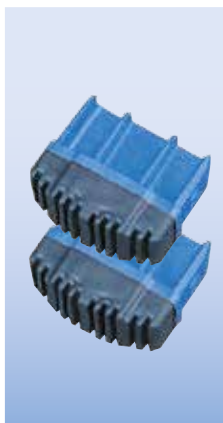


STABILO® Accessories/spare parts

Professional

Foot plugs (pair)

+ For **STABILO®** ladders



Side rail dimensions	Article No.
64 x 25	211002
77 x 25	211019
97 x 25	211026

Stabiliser foot cap

+ For **STABILO®** ladders



Side rail dimensions	Article No.
64 x 25	211064

Conductive foot plugs (pair)

+ Resistance < 106 Ω/m
+ Conforms to DIN EN 13463-1



Side rail dimensions	Article No.
64 x 25	212597
77 x 25	212603
97 x 25	212610

Conductive foot caps for stabilisers

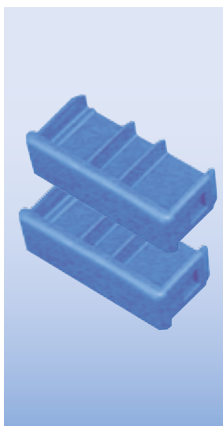
+ Resistance < 106 Ω/m
+ Conforms to DIN EN 13463-1



Side rail dimensions	Article No.
64 x 25	212627

Top end plugs (pair)

+ For **STABILO®** ladders



Side rail dimensions	Article No.
64 x 25	211033
77 x 25	211040
97 x 25	211057

Foot caps

+ For outer side rail of the telescopic hinged ladder



Side	Article No.
Left	212443
Right	212436

Foot plugs (pair)

+ For outer side rail of the telescopic hinged ladder with side rail extensions



Article No.
211231

Ladder hooks

+ For hooking into weight supporting tubes approx. Ø 30 mm
+ Also available in other shapes on request



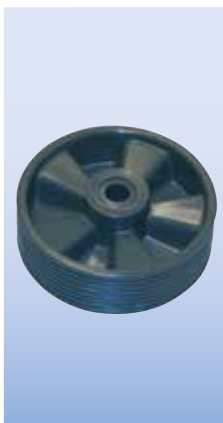
Article No.
122308

STABILO® Accessories/spare parts

Professional

Wall castors

+ For rope-operated and multipurpose ladders



Article No.
212740

Wall castors (set)

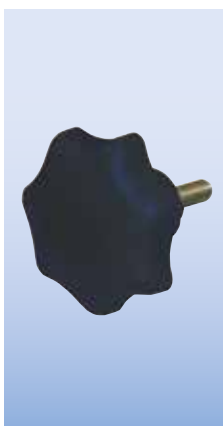
+ For rope-operated and multipurpose ladders



Article No.
122254

Star knob screw

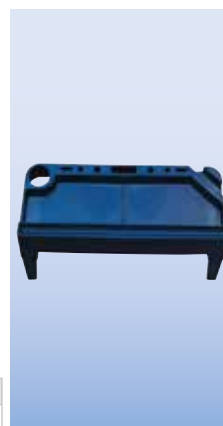
+ For telescopic hinged ladders



Article No.
212481

Tool and work tray for STABILO® ladders

Professional



Article No.
212566

Ground strap

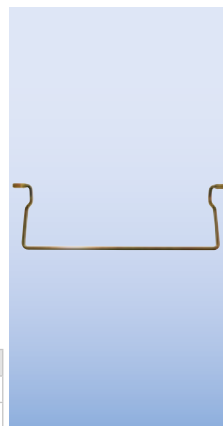
+ For grounding mobile scaffolds and steps etc.



Article No.
212702

One-hand release bar

+ To release a pair of hinges
+ Please indicate article no. and name of the inquired/ordered ladder



Width mm	Article No.
293	212115
353	212122

Release hand gear

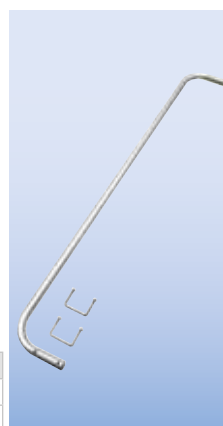
+ To release hinges
+ Please indicate article no. and name of the inquired/ordered ladder



Article No.
212535

Hand rail

+ For leaning step and rung ladders to be equipped afterwards



Hand rail	Article No.
8-10 steps	817327
12-18 steps	817334

STABILO® Accessories/spare parts

Hinge

- + For **STABILO** Professional double-sided ladders with rungs



Article No.
212801

Hinge

- + For **STABILO** Professional double-sided step ladders



Article No.
212818

Hinge

- + For **STABILO** Professional step ladders



Article No.
212825

ToolBag – tool deposit rag

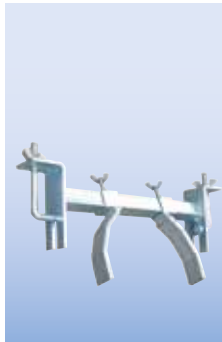
- + A practical all purpose tool deposit rag for small items, e.g. tools
- + Suitable for the use on all double-sided ladders with rungs
- + Robust design made of fibre-reinforced PVC
- + Suitable for a max. load of 10 kg (290 x 570 mm)



Article No.
123824

Mast claw

- + For safe mounting of ladders with rungs on masts with a size from 100 to 250 mm
- + For ladders with an internal width of 300 – 400 mm
- + TÜV-approved



Article No.
122452

Spring castor

- + For shelf ladders



Article No. (right/left)
815156 815163

Extra Stabiliser

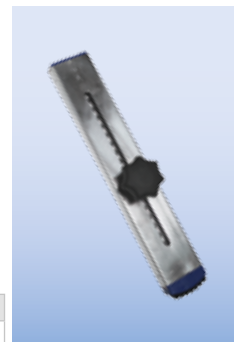
- + For **STABILO** Professional step ladders



Article No. (Length 1200/1000mm)
212269 212252

Side rail extension

- + Side rail extension for telescopic hinged ladders

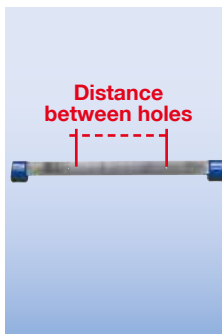


Article No.
201263

Stabiliser

Please indicate the following information in your order:

- + Article No. / Year of production
- + Distance between mounting holes (middle hole to middle hole)
- + Ladder size, e.g. 3 x 12 rungs
- + Side rail dimensions, e.g. 77 x 25 mm



Straps

- + To stabilise ladders

Please indicate the following information in your order:

- + Article No.
- + Strap length
- + Ladder size
- + Strap fastening type, e.g. rivetted or screwed

