

## System components for fixed ladders

**Ladder section 1.96 m long**



Product information	Article No.
Steel galvanised	835536

**Ladder section 2.80 m long**



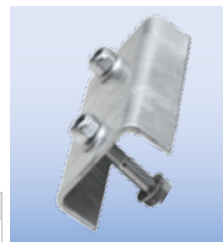
Product information	Article No.
Steel galvanised	835543

**Ladder section 3.64 m long**



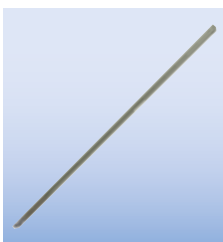
Product information	Article No.
Steel galvanised	835550

**Ladder connector**



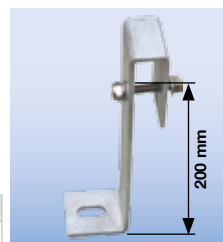
Product information	Article No.
Steel galvanised	835529

**Single-sided exit rail**



Product information	Article No.
Steel galvanised	835772

**Wall anchor, rigid 200 mm**



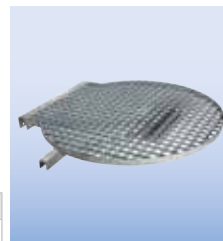
Product information	Article No.
Steel galvanised	835239

**Back protection bracket**



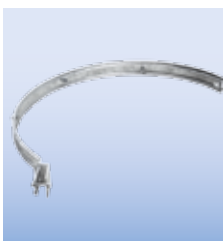
Product information	Article No.
Steel galvanised	835420

**Intermediate platform**



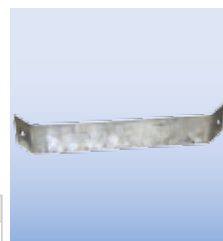
Product information	Article No.
Steel galvanised	835444

**3/4 back protection bracket**



Product information	Article No.
Steel galvanised	835437

**Connector for double back protection bracket**



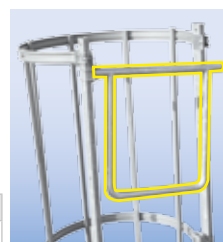
Product information	Article No.
Steel galvanised	835413

**Back protection brace, 3,000 mm long**



Product information	Article No.
Steel galvanised	835567

**Safety gate**



Product information	Article No.
Steel galvanised	835499

## System components for fixed ladders

### Base platform

- + Steel galvanised
- + With grating and two wall brackets
- + With rails on one longside and on front side

### Extension platform

- + Steel galvanised
- + With grating and two wall brackets
- + With rails on one longside and on front side
- + The extension units can be screwed together side by side in any number to set up a larger platform
- + In general the base platform is attached at the end as the last section



Size	in mm	1.000 x 1.000
Weight	approx. kg	68.0
Article No.		835574



Size	in mm	500 x 1.000
Weight	approx. kg	33.5
Article No.		835581

### Crossover

- + Steel galvanised grating

**Recommendation:** For the mounting of the ladder adjustable wall anchors or footplates are recommended and if necessary the right ladder section has to be ordered separately.



Product information	Article No.
Steel grating, 450 mm	835383
Steel grating, 750 mm	835888
Steel grating, 900 mm	835895

### Exit railing

- + Angled
- + Projection 450 mm



Image 2x rails 835314

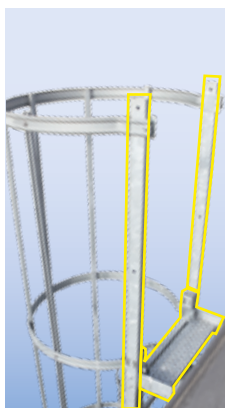
Product information	Article No.
Steel galvanised	835314

## System components for fixed ladders

### Exit step with railing

- + To reduce the gap dimension at the exit
- + Size approx. 540 x 150–300 mm
- + With profiled rungs
- + Incl. 2 exit side rails and clamp connectors for the ladder's side rails

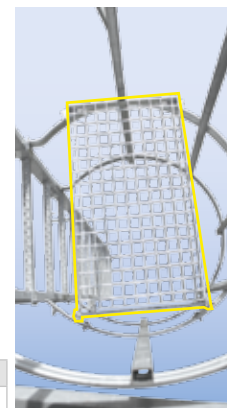
Size of gap in mm	Product information	Article No.
150	Steel galvanised	835376
200		835369
250		835352
300		835345



### Foldable intermediate platform

- + Anti-fall guard and rest platform for single-section fixed ladder
- + Size 625 x 350 mm
- + Integrated into an additional back protection bracket
- + Can be locked with a long U-lock (not included)

Product information	Article No.
Steel galvanised	835475



### Security door

- + With access barrier at the top
- + Lockable with a padlock (not included)

Article No.
835642



### Emergency escape ladder

- + With automatic release mechanism at the top
- + Effective length to floor 3.06 m
- + Distance between back protection bracket and floor max. 3.00 m

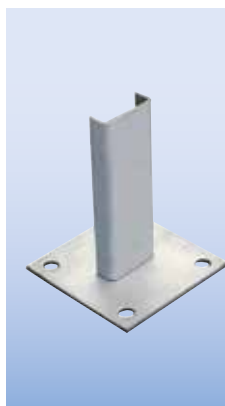
Product information	Article No.
Plain aluminium	835666



### Foot plate

- + To anchor the fixed ladder to the ground
- + Size 120 x 120 mm
- + Screw hole  $\varnothing$  15 mm

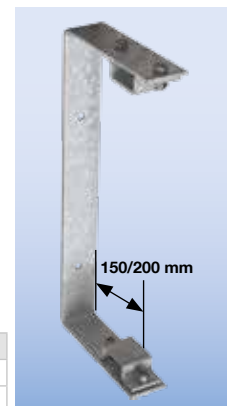
Product information	Article No.
Steel galvanised	835123



### Wall anchor, rigid

- + U-shaped

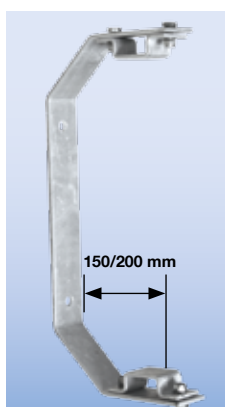
Product information	Article No.
150 mm	835086
200 mm	835093



### Wall anchor, rigid

- + V-shaped

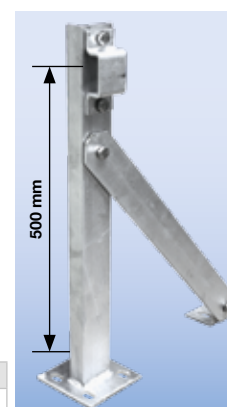
Product information	Article No.
150 mm	835109
200 mm	835116



### Wall anchor, rigid

- + 500 mm

Product information	Article No.
500 mm	835338

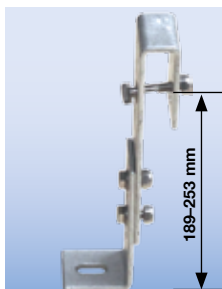


## System components for fixed ladders

### Wall anchor, adjustable

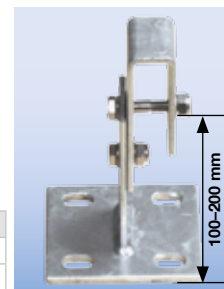
+ Standard

Product information	Article No.
189–253 mm	835246



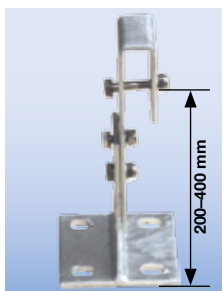
### Wall anchor, adjustable

Product information	Article No.
100–150 mm	835192
150–200 mm	835208



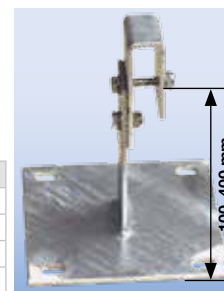
### Wall anchor, adjustable

Product information	Article No.
200–270 mm	835215
270–400 mm	835222



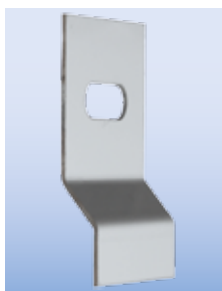
### Wall anchor with large base plate

Product information	Article No.
100–150 mm	835253
150–200 mm	835277
200–270 mm	835260
270–400 mm	835284



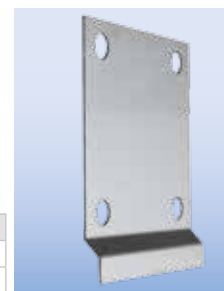
### Water deflector plate for standard wall anchor

Product information	Article No.
Stainless steel	835031



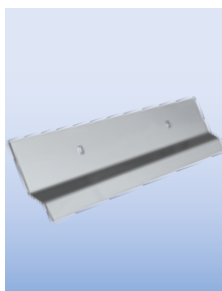
### Water deflector plate for base plate

Product information	Article No.
Stainless steel 120 x 120 mm	835055
Stainless steel 200 x 200 mm	835048



### Water deflector plate for U-shaped wall anchor

Product information	Article No.
Stainless steel for U-shape	835017



### Water deflector plate for V-shaped wall anchor

Product information	Article No.
Stainless steel for V-shape	835000

